

STUDIO **D**

GENERAL COLLECTION

GRAFFETTA



Graffetta 36" x 32" x13H" (shown in clear glass)

GRAFFETTA

Created in 1/2" glass and available in clear or colored glass and with or without machined aluminum feet.



Graffetta with feet 36" x 32" x15H" (shown in metalizzato grigio)

FIOCCO



FIOCCO

Created in 1/2" glass and available
in clear or colored glass.

Fiocco 47" x 23" x17H" (shown in clear glass)

LINK



Link cocktail 47" x 26" x 15H"
(shown in clear with frosted shelf)

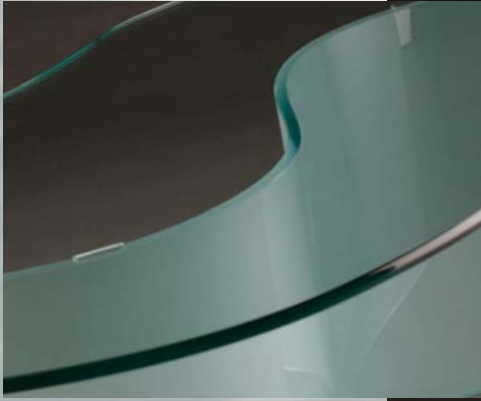
LINK

Created with 1/2" glass and available in cocktail or console dimensions. The link shelf is always frosted or colored glass.



Link console 44" x 13" x 28H" *(shown in clear with frosted shelf)*

WAVE Cocktail



WAVE Cocktail

Cocktail table created with 1/2" glass, available with clear or colored base and/or top.



55 x 32 x 14H"

Wave cocktail (shown with frosted base and clear top)



LOOP Cocktail



LOOP Cocktail

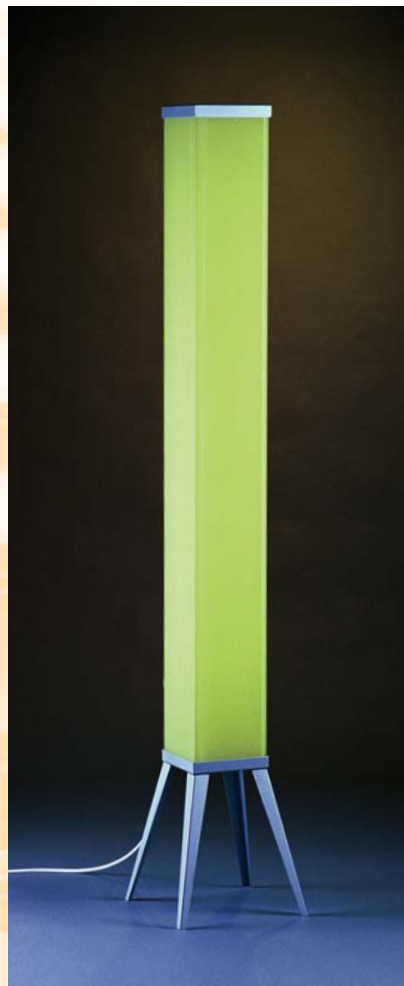
Created with 3/4" precision cut and bonded glass. The Loop cocktail comes with a 26" x 50" top standard. *Quotations are available for custom tops.*

Loop Cocktail (color shown: clear top with Only amber base)

UPLIGHT

UPLIGHT

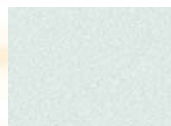
A UL listed floor lamp available in sixteen colors. *See [uplt color family](#).* Uplight is created with bonded and colored glass and a gray powder-coated steel frame.



Uplight (*shown in uplt yellow*)

Uplt Family

Colors are semi-translucent.



White



Blue



Green



Orange



Red



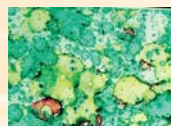
Violet



Yellow

New Old Family

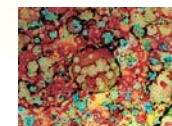
Multiple-color treatment with marbled effect.



New Old 203



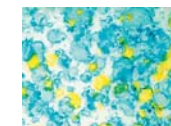
New Old 204



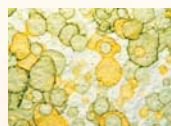
New Old 205



New Old 207



New Old 208



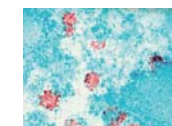
New Old 211



New Old 216



New Old 219



New Old 202



ESSE

Wall shelf created in 1/2" glass, available in clear or color.

Specify curve up or curve down when ordering in color.

Shelf dimensions; 39" x 10"
(colors shown *Curvet azzurro* and *Curvet frosted*)



LUCERNA

Wall shelf created in 1/2" glass, available in clear or color.

Shelf dimensions; 36" x 10" or 46" x 10" (shown in *Curvet frosted*)

Shelves are available with silver or black brackets.

QUAD



Quad shelving unit, dimensions; 18" x 72" x 72H"
(color shown metalizzato oro)

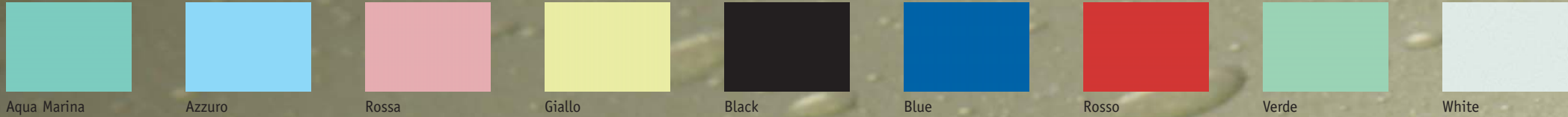


Quad buffet unit, dimensions; 18" x 72" x 36H"
(color shown metalizzato oro)

QUAD

Created with 1/2" bonded glass with 1/4" tempered glass back panels. Colorglass™ finishes are available on the back panels only.

Full Family Opaque solid color, showing a vast range of colors from pastel to more intense primary colors.



Metallizzato Family Semi-opaque mono-color metal flake treatment available in a vast range of colors and bright metallic shades.



Kromo/Only Family Colors are semi-transparent. Excellent when combined with the embossed finish.



Curvet Family Colors are semi-transparent with a texture resembling that of sandblasting.



New Old Family Multiple-color treatment with marbled effect.



New Old 203



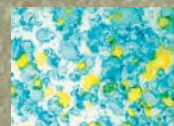
New Old 204



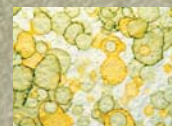
New Old 205



New Old 207



New Old 208



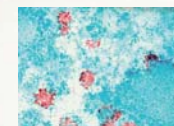
New Old 211



New Old 216



New Old 219

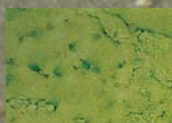


New Old 202

Smokey Family Mono-color treatment with shaded marble effect.



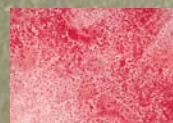
Giallo



Verde



Arancio



Rosso



Marrone



Turchese

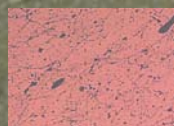


Aqua Marina

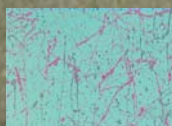


Fume

Marmo Family Opaque dual-color treatment giving the glass a marbled effect.



Marmo 501



Marmo 502

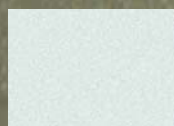


Marmo 503

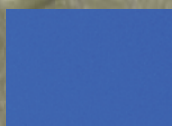


Marmo 504

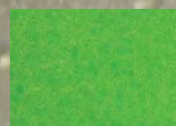
Uplt Family Colors are semi-translucent.



White



Blue



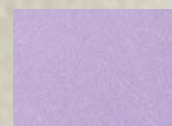
Green



Orange



Red



Violet



Yellow

Coloring is a hand-crafted procedure. The intensity of the color may vary accordingly to production lots, thickness and type of glass.



STUDIO D

CURVET USA INC. | PH. 814.663.0704 | FAX 814.663.0605
www.curvetusa.com